



# Chess'n Math

## C H E S S

## T O U R N A M E N T

### Q u a l i f i c a t i o n

### i n L a v a l

**SUNDAY**  
**March 17th**

**Coclicorne House / l'Entraide**

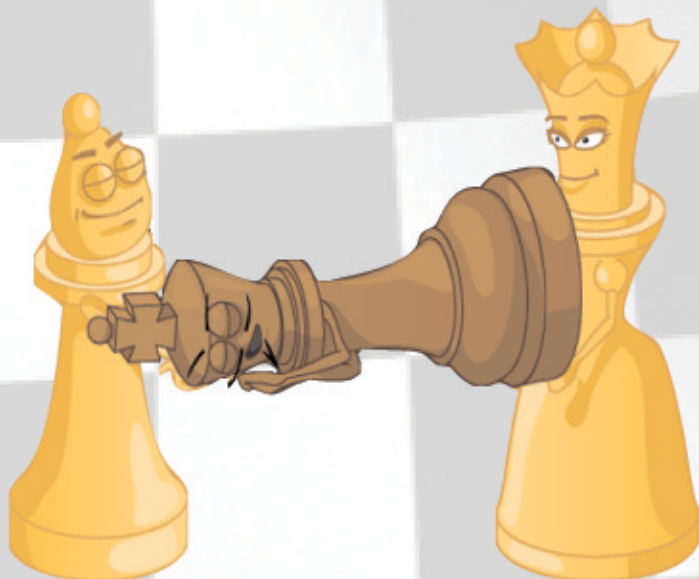
664 Saint-André  
Laval, H7G 3A5

**Registration :** On site from 10:30 to 11:00 AM  
The tournament starts at 11:15am and ends  
around 3:30pm

**Entry Fee on site:** 30\$ Qualification

**Pre-registration on line:** \$25\$ Qualification  
[www.chess-math.org](http://www.chess-math.org)

\*You have until noon Friday March 15th to pre-register



Rated by the Chess'n Math Association,  
Canada's national scholastic chess organization.

Regular Tournament, players who have a rating play  
by rating and new players play against other new  
players.

Qualification, all players play with other players in  
the same school grade.

Everyone plays 5 games.  
Our tournaments are structured so that players who know how  
to check mate will have fun.

**Prix :** Medals for the winners of each section

**Information :** Chess'n Math  
[www.chess-math.org](http://www.chess-math.org) - (514) 845-8352